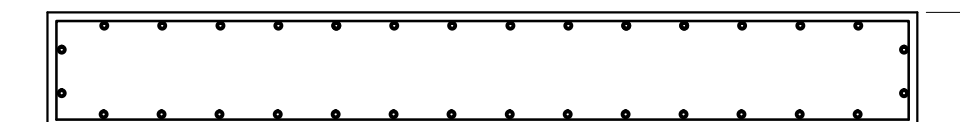
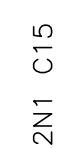


RESUMO DO AÇO			
ACO	DIAM.	C.TOTAL (m)	PESO+ 5% (kgf)
CA50B	8.0	18.8	7.43
CA50B	10.0	142.6	88.11
PESO TOTAL CA50B 95.53 kgf			

ESC. 1:25



RESUMO DO AÇO			
ACO	DIAM.	C.TOTAL (m)	PESO+ 5% (kgf)
CA50B	8.0	18.8	7.43
CA50B	10.0	144.2	88.97
PESO TOTAL			
CA50B	96.40 kgf		

ESC. 1:25

[illegible]